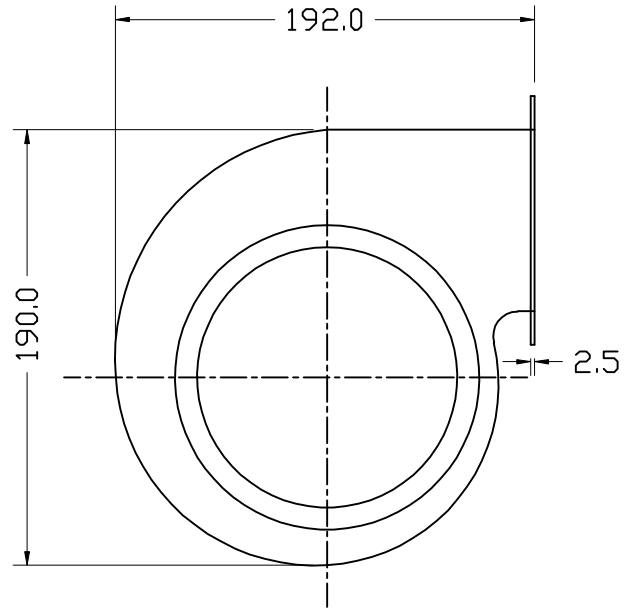
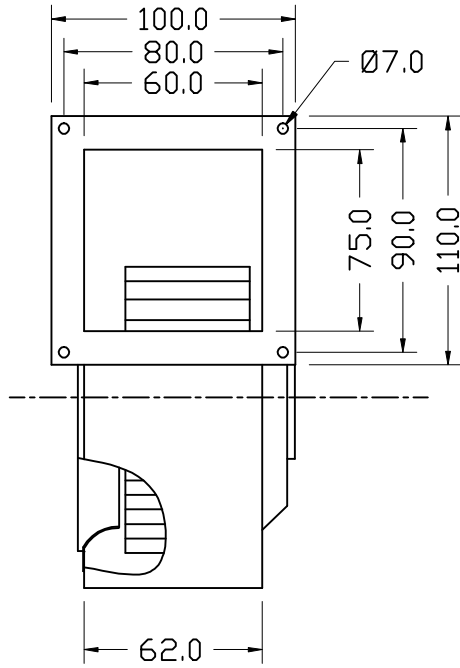




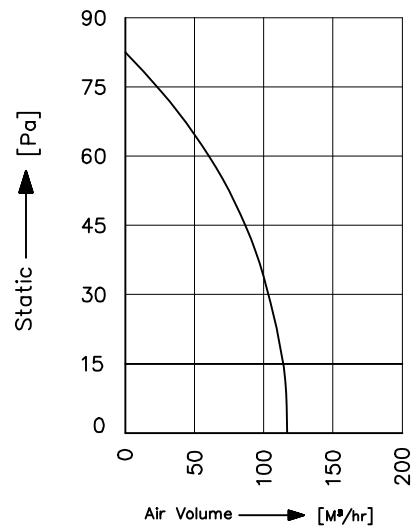
# TECHNICAL DATA SHEET



## SPECIFICATION (50Hz)

|                      |      |
|----------------------|------|
| Voltage (V)          | 230  |
| Watt (W)             | 37   |
| Amps (A)             | 0.17 |
| Speed (rpm)          | 1400 |
| Capacitor ( $\mu$ F) | 1.0  |
| Airflow ( $m^3/hr$ ) | 125  |
| Noise (db)           | 60   |
| Net Weight (Kg)      | 2.5  |

## PERFORMANCE CURVE



Conversion: 100pa  $\approx$  0.4" H2O 100m<sup>3</sup>/hr  $\approx$  60cfm

All information contained in this document is CONFIDENTIAL and the property of VBM. Reproduction of this any form is to be done with the specific permission of the company.

### \*Material :

- Impeller: G.I, Zinc Plated
- Housing: Steel, powder coated
- Rotor: Powder coated

\*Type of protection: IP-54

\*Insulation Class: "F"- Class

\*Bearing: Maintenance free Ball Bearing.

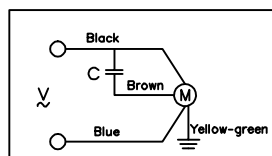
\*Permissible ambient temperature: 0 to 60° C

\*High Voltage test according to IS: 3588-1987

\*Balancing Grade: Fans conform 2.5 Grade as recommended by IS 1940-1973

\*Direction of rotation: Clockwise, Seen on rotor

### \*Wiring Diagram :



NOTE: ALL DIMENSIONS ARE IN MM.

MODEL : SI23/133-14/S1

SCALE: NTS Page 1 of 1

REV/DATE: 01,29.11.2013

PREPARED BY : J.G.P

CHECKED BY : S.B.D

