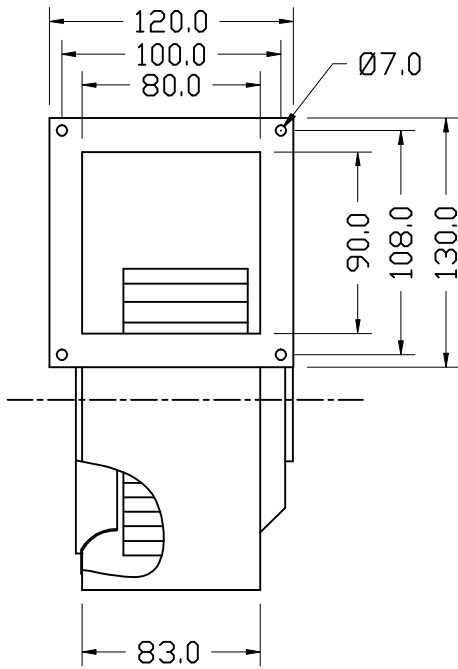


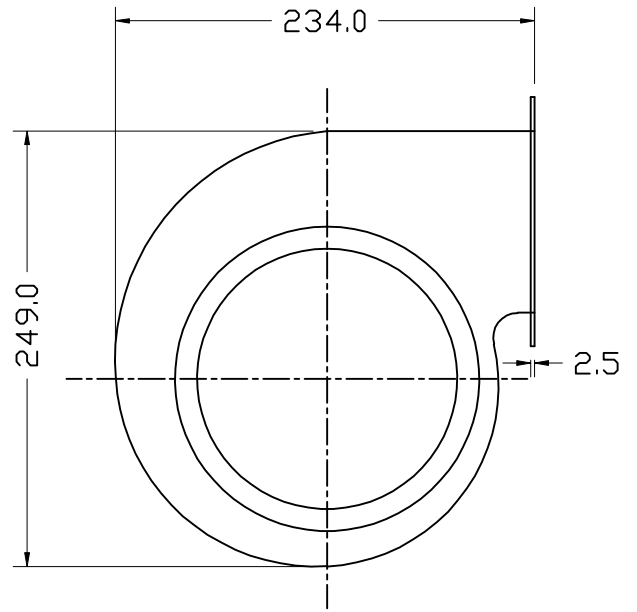


TECHNICAL DATA SHEET

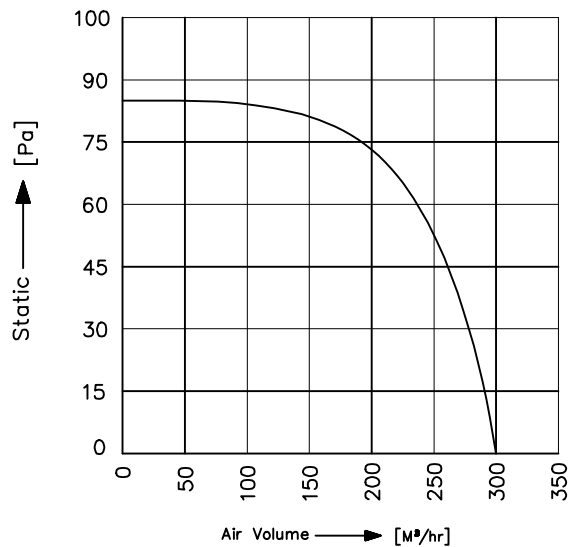


SPECIFICATION (50Hz)

Voltage (V)	230
Watt (W)	80
Amps (A)	0.32
Speed (rpm)	1450
Capacitor (µF)	3.15
Airflow (m ³ /hr)	300
Noise (db)	65
Net Weight (Kg)	4.0



PERFORMANCE CURVE

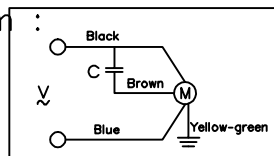


Conversion: 100pa ≈ 0.4" H₂O 100m³/hr ≈ 60cfm

All information contained in this document is CONFIDENTIAL and the property of VBM. Reproduction of this any form is to be done with the specific permission of the company.

- *Material :
 - Impeller: G.I, Zinc Plated
 - Housing: Steel, powder coated
 - Rotor: Powder coated
- *Type of protection: IP-54
- *Insulation Class: "F"- Class
- *Bearing: Maintenance free Ball Bearing.
- *Permissible ambient temperature: 0 to 60° C
- *High Voltage test according to IS: 3588-1987
- *Balancing Grade: Fans conform 2.5 Grade as recommended by IS 1940-1973
- *Direction of rotation: Clockwise, Seen on rotor

*Wiring Diagram :



NOTE: ALL DIMENSIONS ARE IN MM.

MODEL : SI23/160-14/S3

SCALE: NTS Page 1 of 1

REV/DATE: 01,29.11.2013

PREPARED BY : J.G.P

CHECKED BY : S.B.D

